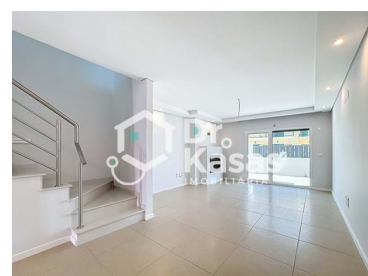




## Fernão Ferro - Villa



3

Bedrooms



3

Bathrooms



130

 Area (m<sup>2</sup>)


98

 Land Area (m<sup>2</sup>)

**390 000 €**

(EUR €)

## Brand new 3 bedroom semi-detached house for sale in Pinhal General, Fernão Ferro

New 3 bedroom semi-detached house in Pinhal General, Fernão Ferro - modernity and tranquility

If you are looking for a new villa with modern finishes, located in a quiet area, this may be the ideal choice. We present a 3 bedroom semi-detached house with two floors, to debut in Pinhal General, Fernão Ferro. Inserted in a plot of 98m<sup>2</sup>, with a gross area of 129m<sup>2</sup>, this house offers the space and comfort necessary for a quiet family life.

### Distribution of spaces

On floor 0, the villa has an entrance hall that includes a storage area, providing practicality from the


**Tânia Constantino**

 +351933927001 <sup>2</sup>

taniaconstantino@drkasas.pt

T +351 212 040 085 <sup>1</sup> · E geral@drkasas.pt  
 Avenida do Bocage, nº11, Loja 2, 2830-003 Barreiro  
 AMI 14035

<sup>1</sup> (Call to national fixed network) | <sup>2</sup> (Call to national mobile network)



first moment. The living room, equipped with a Bronpi fireplace and stove, is ideal for family gathering moments.

The kitchen, modern and functional, includes thermo-laminated furniture, silistone countertop and stainless steel sink, and is equipped with hob, oven and extractor fan. This floor is complemented by a full bathroom with window, ensuring comfort and natural ventilation.

On the 1st floor, there are three bedrooms, all with built-in wardrobes to maximize storage space. The master suite has a large balcony, perfect for moments of relaxation outdoors. Another of the bedrooms also features a balcony, while the third bedroom offers a warm and bright atmosphere. This floor also includes an additional bathroom with window.

### Outdoor space and amenities

The exterior of the villa offers a water point and lighting, as well as parking for one or more cars. The manual gate is prepared to be automated, increasing convenience and safety.

### Equipment and technology

This villa is equipped with 300 liter solar panels, ensuring energy efficiency. The floating and mosaic floor, the high-security armored door, the pre-installation of air conditioning in all rooms, the pvc frames with double tilt-and-turn glazing, the electric and thermal shutters, the central vacuum, and the false ceiling with led lighting spots complete the list of amenities that make this property a modern and comfortable choice.

Location Pinhal General, in Fernão Ferro, is a quiet residential area, ideal for those who want to live close to nature and away from the noise of the city. The area is well served by road access, making it easy to travel to Lisbon, Setúbal and other areas of the South Bank. In addition, it is close to schools, supermarkets and essential services, making everyday life more practical and pleasant.

Let's visit !



**Tânia Constantino**

+351933927001 <sup>2</sup>

taniaconstantino@drkasas.pt

**T +351 212 040 085 <sup>1</sup> · E geral@drkasas.pt**  
**Avenida do Bocage, nº11, Loja 2, 2830-003 Barreiro**  
**AMI 14035**

<sup>1</sup> (Call to national fixed network) | <sup>2</sup> (Call to national mobile network)



## Property Features

- Central vacuum system
- Fitted wardrobes
- Air conditioning pre installation
- Built year: 2024
- Electric shutters
- Drive way
- Views: Countryside views, Urbanization view
- Quiet Location
- Central location
- Closed fireplace
- Energetic certification: A+
- Mains water
- Fireplace
- Laminated floor
- Proximity: Mountain, Beach, Restaurants, Open field, Pharmacy, Public Transport, Schools, Playground
- Double glazing
- Video entry system
- Floors: 2
- Main drainage
- Balcony
- Solar heating
- Security door
- Solar orientation: North, South, East, West



**Tânia Constantino**

+351933927001 <sup>2</sup>

taniaconstantino@drkasas.pt

**T +351 212 040 085 <sup>1</sup> · E geral@drkasas.pt**  
**Avenida do Bocage, nº11, Loja 2, 2830-003 Barreiro**  
**AMI 14035**

<sup>1</sup> (Call to national fixed network) | <sup>2</sup> (Call to national mobile network)